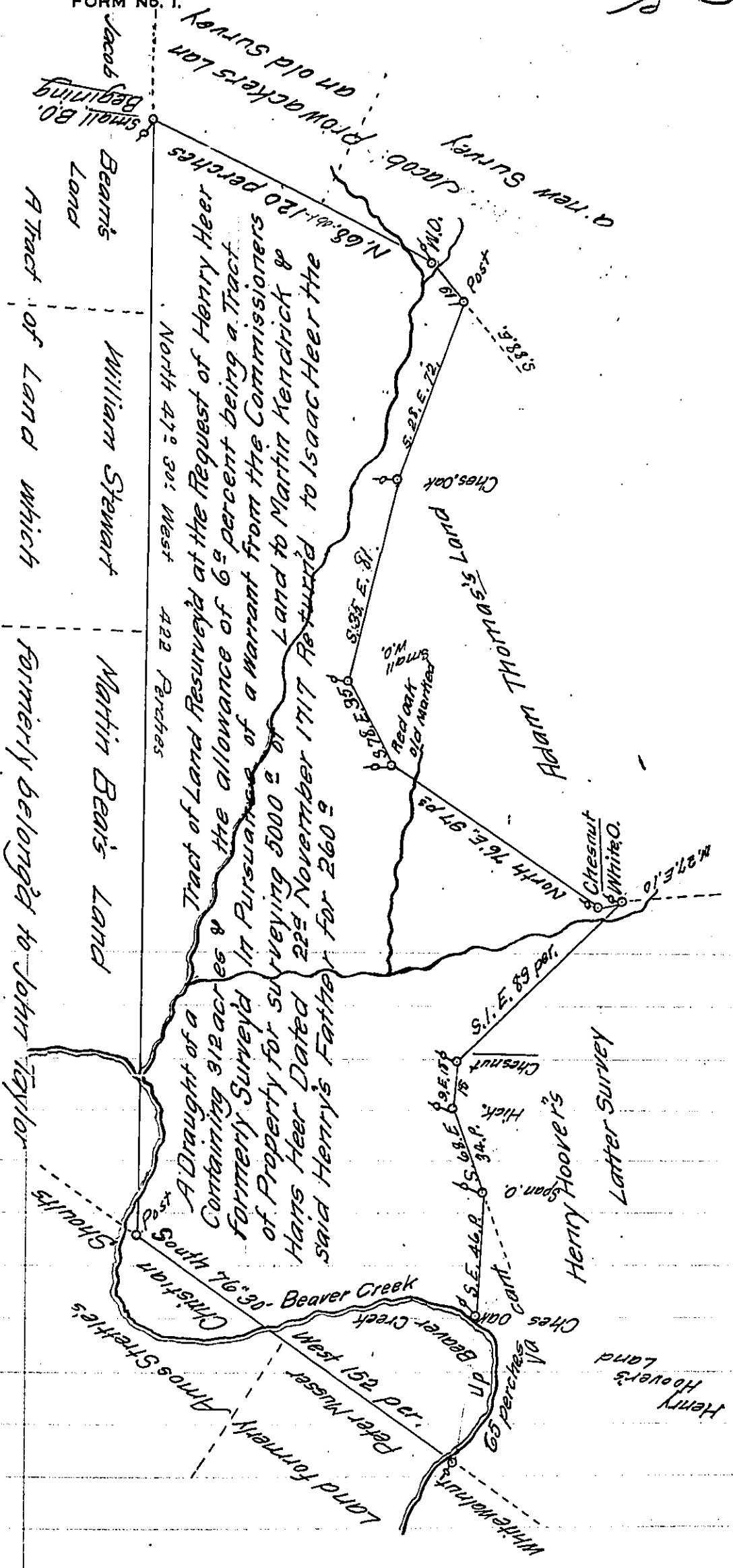


FORM No. 1.



The Tract of Land Represented by this Draught is Situate on Beaver Creek in Martick Township Lancaster County, was Returned to the Secretaries Office the 19th of March 1747's & 260 s
 But on a Resurvey is found to Contain 312 s & the allowance of 6 2/3 per Cent Resurveyed 22nd Nov 1717 & Certified

By George Churchman

Scale of 60 p to an Inch

A Copy of this Return left in the Surveyor Generals' office the 20th of the 6mo 1760

IN TESTIMONY that the above is a copy of the original remaining on file in the Department of Internal Affairs of Pennsylvania, made conformably to an Act of Assembly approved the 16th day of February, 1833, I have hereunto set my Hand and caused the Seal of said Department to be affixed at Harrisburg, this Seventh day of February 1910

Henry Houck
 Secretary of Internal Affairs.